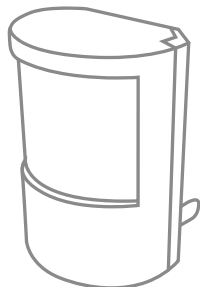




HS3PIR2X

Contents (1) Inhalt (2) Contenu (3) Inhoud (4) Sisältö (5) Inhoud (6) Contenido (7) Conteúdo (8) Trüchpöjueva (9) Innehåll



x2



x4

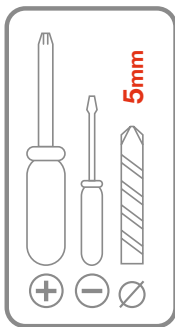


20mm

x4



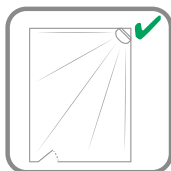
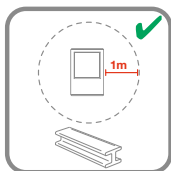
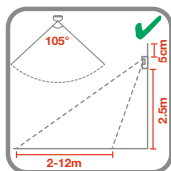
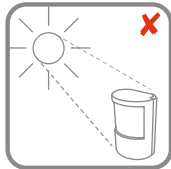
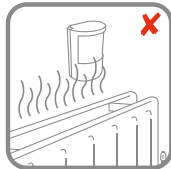
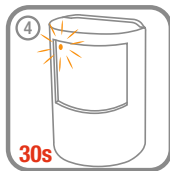
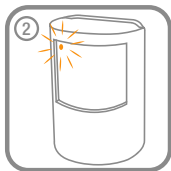
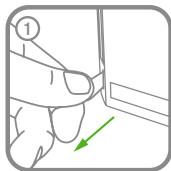
x4



5mm

- Ⓒ Setup Ⓓ Einrichtung Ⓔ Configuration
- Ⓜ Installation Ⓝ Asetus Ⓢ Opsettning
- Ⓝ Configuración Ⓔ Configurazione Ⓓ Configuración
- Ⓜ Põlvõn Ⓔ Installering

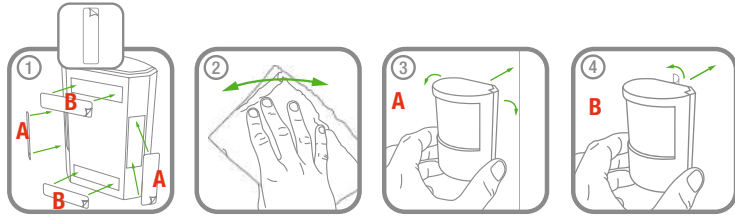
- Ⓒ Location planning Ⓔ Planung des Montageortes
- Ⓜ Identification du meilleur emplacement Ⓝ Localieplanning
- Ⓜ Sijainnin suunnittelu Ⓢ Planlegging af þubúcering
- Ⓜ Posizionamento Ⓔ Planificaci3n de la ubicaci3n
- Ⓜ Planeamento de localiza33o Ⓢ Xuporaci3n Ⓔ Placering



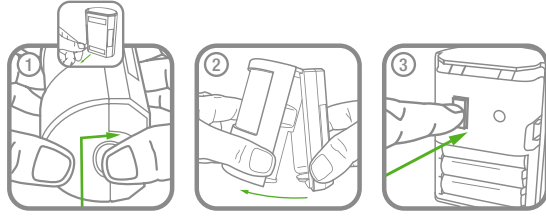
Ⓒ Put alarm into learn mode for linking. Refer to online manual. Ⓓ Zum Einlernen Alarmanlage in den Programmiermodus versetzen. Siehe Handbuch. Ⓜ Mettre l'alarme en mode apprentissage pour la liaison. Consulter le manuel en ligne. Ⓝ Alarm in leermodus voor koppelen zetten. Zie de online handleiding. Ⓢ Aseta hälytin oppimistilaan linkitystä varten. Katso käsikirja verkosta. Ⓢ Sæt alarmer i programmeringsfunktion med henblik på tilslutning. Se online vejledningen. Ⓜ Mettere l'allarme in modalità di apprendimento per effettuare il collegamento. Fare riferimento al manuale online. Ⓔ Coloque la alarma en el modo de aprendizaje para el enlace. Consulte el manual en línea. Ⓢ Coloque o alarme no modo de aprendizagem para efectuar a ligação. Consulte o manual online. Ⓒ Βάλτε το συναγερμό σε λειτουργία μάθησης για ζεύξη. Ανατρέξαιτε στο εγχειρίδιο στο διαδικτυο. Ⓓ Sätta larmer i inlärningsläget för länkning. Se onlinehandboken.



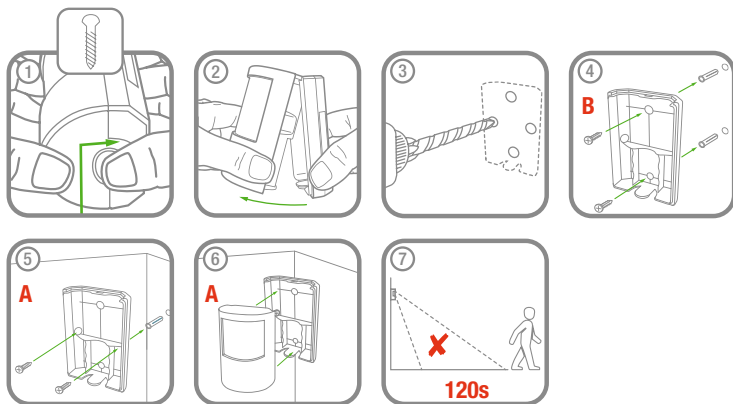
- DE Installation
- FR Installation
- NL Installatie
- FI Asemus
- DK Installation
- IT Installazione
- ES Instalación
- PT Instalação
- GR Εγκατάσταση
- SE Installation



- DE Manuel linking to alarm
- FR L'ajout manuel vers alarme
- FI Manuaalinen linkitys hälytykseen
- DK Manuelt tilslutning til alarm
- IT Collegamento manuale con allarme
- ES Enlazando manualmente a alarma
- PT Ligação manual ao alarme
- SE Manuell länkning till larm



GB Installation DE Installation FR Installation
 NL Installatie FI Asennus OK Installation
 IT Installazione ES Instalación 2 Instalação
 3 Εγκατάσταση 4 Installation



GB Exit alarm learn mode. Refer to online manual. DE Programmiermodus beenden.
 Siehe Handbuch. FR Quitter le mode apprentissage. Consulter le manuel en ligne.
 NL Leermodus verlaten. Zie de online handleiding. FI Lopeta oppimistila.
 Katso käsikirja verkosta. OK Afslut programmeringsfunktion. Se den online vejledning.
 IT Uscire dalla modalità di apprendimento. Fare riferimento al manuale online.
 ES Salga del modo de aprendizaje. Consulte el manual en línea. PT Saia do modo
 de aprendizagem. Consulte o manual online. GR Εξόδος από τη λειτουργία μάθησης.
 Ανατρέξτε στο εγχειρίδιο στο διαδίκτυο. 39 Avsluta läroläge. Se onlinehandbok.



GB Trouble shooting DE Fehlerbehebung FR Dépannage NL Probleemoplossing
 FI Vianmääritys OK Problemlösning IT Risoluzione dei problemi ES Solución de
 problemas PT Resolução de problemas 39 Αντιμετώπιση προβλημάτων 39 Felsöknning

livewell.honeywell.com



32306101-001 Rev_C

© 2020 Resideo Technologies, Inc. All rights reserved.
 The Honeywell Home trademark is used under the license from Honeywell International Inc.
 This product is manufactured by Resideo Technologies, Inc. and its affiliates.